

7'x16' Rock Solid Cargo Enclosed Cargo



~~\$11,369~~ **\$10,369**

Stock #: 10597

VIN: 7H2BE1625SD068397

Category: Enclosed Cargo

Cond.: New

Year: 2025

Make: Rock Solid Cargo

Model: 7 X 16 TA

Color: Black

Width: 7' **Length:** 16'

GVWR: 10K

ADDITIONAL DETAILS: Height: 6' 6", Weight: 2,260, Axles: 2, Pull Type: Bumper, Construction: Steel, Features: .080 Exterior Siding, 2 Way Aluminum Side Wall Vent, ATP Front and Rear Corners

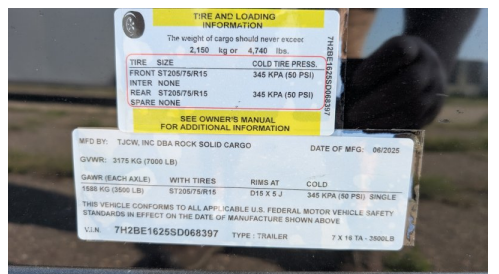
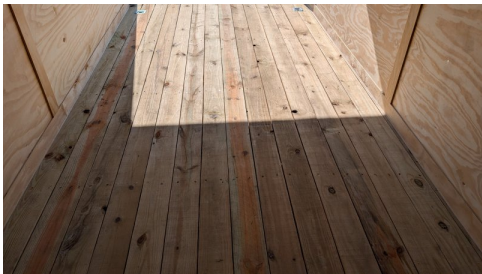
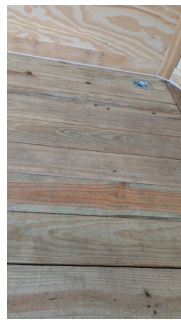
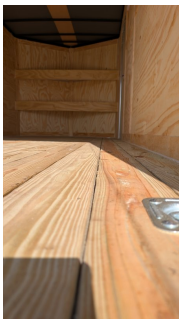
7'x16' Rock Solid Cargo 7 X 16 TA Enclosed Cargo

This trailer features a sleek and durable exterior with .080 exterior siding, providing a smooth finish with semi-screwless seams for a clean look. The ATP front and rear corners add extra protection and a polished appearance. Enhanced ventilation is provided by 2-way aluminum sidewall vents, ensuring optimal airflow.

The landscape package trailer is built for durability and convenience, featuring a 60" triple tube extended tongue for easy maneuverability and a robust 5200 lb drop spring axle with electric brakes for reliable stopping power. Its 12" on center cross members and 2x6 pressure-treated planks provide a solid, long-lasting bed, while the bar lock on the side door and security hasps for all barlocks ensure your equipment is safe. Plus, front-mounted shelves offer practical storage for tools and supplies.

This heavy-duty enclosed trailer is built with a robust 6" steel tube main frame and features 16" on-center spacing for its roof bows, floor cross members, and sidewalls, ensuring superior structural integrity. It boasts a durable 3/8" plywood walls, complemented by a Therma Cool ceiling liner for climate management. Access is convenient through a 36" side door with a flush lock, illuminated by a 12-volt LED dome light. It rides on E-Z Lube hubs, all on silver mod wheels with aluminum fenders. Additional features include a 2 5/16" coupler, 24" stone guard, a streamlined V-nose design, and full LED lighting. Inside, 4 floor mount D-rings help secure your cargo, and it connects easily with a 7-way Bargman plug.

#10597 Continued ...



TIRE AND LOADING INFORMATION				
The weight of cargo should never exceed 2,150 kg or 4,740 lbs.				
TIRE SIZE	COLD TIRE PRESS.			
FRONT ST205/76R15	345 KPA (50 PSI)			
INTER NONE				
REAR ST205/76R15	345 KPA (50 PSI)			
SPARE NONE				
SEE OWNER'S MANUAL FOR ADDITIONAL INFORMATION				
WFO BY: T/JCH, INC DBA ROCK SOLID CARGO	DATE OF MFG: 06/2025			
GVWR: 2175 KG (7000 LB)				
SAWR (EACH AXLE)	WITH TIRES	RIMS AT	COLD	
1700/76R15		D15 X 5 J	345 KPA (50 PSI) SINGLE	
THIS VEHICLE CONFORMS TO ALL APPLICABLE U.S. FEDERAL MOTOR VEHICLE SAFETY STANDARDS IN EFFECT ON THE DATE OF MANUFACTURE SHOWN ABOVE				
V.I.N.	7H2BE1625D068397	TYPE	TRAILER	7 X 16 TA - 3500LB