

7'x16' Rock Solid Cargo Enclosed Cargo



~~\$11,799~~ **\$10,799**

Stock #: 10601

VIN: 7H2BE1627TD068399

Category: Enclosed Cargo

Cond.: New

Year: 2026

Make: Rock Solid Cargo

Model: 7 X 16 TA

Color: Black

Width: 7' **Length:** 16'

GVWR: 10K

ADDITIONAL DETAILS: Trim: Landscape Package, Height: 6' 6", Weight: 2,260, Axles: 2, Pull Type: Bumper, Construction: Steel, Features: .080 Exterior Siding, 2 Way Aluminum Side Wall Vent, ATP Front and Rear Corners, BLACK OUT PKG, Landscape Package, Semi Screwless - Seams Only

7'x16' Rock Solid Cargo 7 X 16 TA Enclosed Cargo

This trailer features a sleek and durable exterior with .080 exterior siding, providing a smooth finish with semi-screwless seams for a clean look. The ATP front and rear corners add extra protection and a polished appearance. Enhanced ventilation is provided by 2-way aluminum sidewall vents, ensuring optimal airflow.

Blackout Special PKG

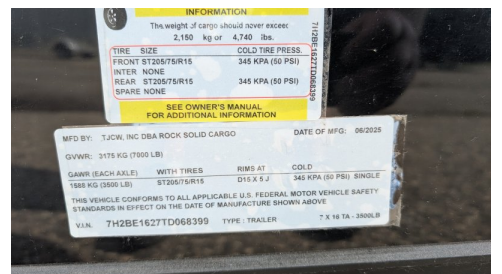
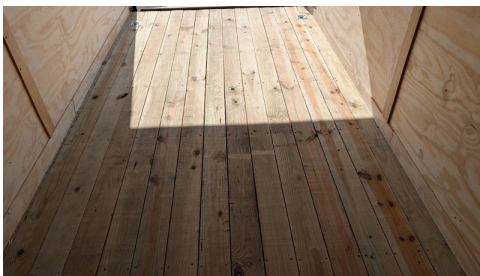
Features a striking Black Out Package, highlighted by all black trim and sleek black ATP fenders. It boasts a black stone guard and V-nose for a unified aesthetic, complemented by black ATP stepwells on 8.5' wide models. The look is completed with black barlocks, aluminum wheels with black inlay, and black aluminum side vents, creating a bold and cohesive appearance.

Landscape Package

This landscape package trailer is built for durability and convenience, featuring a 60" triple tube extended tongue for easy maneuverability and a robust 5200 lb drop spring axle with electric brakes for reliable stopping power. Its 12" on center cross members and 2x6 pressure-treated planks provide a solid, long-lasting bed, while the bar lock on the side door and security hasps for all barlocks ensure your equipment is safe. Plus, front-mounted shelves offer practical storage for tools and supplies.

This heavy-duty enclosed trailer is built with a robust 6" steel tube main frame and features 16" on-center spacing for its roof bows, floor cross members, and sidewalls, ensuring superior structural integrity. It boasts a durable 5/8" plywood floor and 3/8" plywood walls, complemented by a Therma Cool ceiling liner for climate management. Access is convenient through a 36" side door with a flush lock, illuminated by a 12-volt LED dome light. Additional features include a 2 5/16" coupler, 24" stone guard, a streamlined V-nose design, and full LED lighting. Inside, 4 floor mount D-rings help secure your cargo, and it connects easily with a 7-way Bargman plug.

#10601 Continued ...



| INFORMATION | | | |
|--|------------------|----------------------|----------------------------|
| This weight of cargo should never exceed: | | | |
| 2,150 kg or 4,740 lbs. | | | |
| TIRE SIZE | COLD TIRE PRESS. | | |
| FRONT ST205/5R15 | 345 KPA (50 PSI) | | |
| INTER NONE | 345 KPA (50 PSI) | | |
| REAR ST205/5R15 | 345 KPA (50 PSI) | | |
| SPARE NONE | | | |
| SEE OWNER'S MANUAL FOR ADDITIONAL INFORMATION | | | |
| MFD BY: TJCW, INC DBA ROCK SOLID CARGO | | DATE OF MFG: 06/2025 | |
| GVWR: 3175 KG (7000 LB) | | | |
| CARRN (EACH AXLE) | WITH TIRES | RIMS AT | COLD |
| 1988 KG (3900 LB) | ST205/5R15 | D15 X 5 J | 345 KPA (50 PSI) SINGLE |
| THIS VEHICLE CONFORMS TO ALL APPLICABLE U.S. FEDERAL MOTOR VEHICLE SAFETY STANDARDS IN EFFECT ON THE DATE OF MANUFACTURE SHOWN ABOVE | | | |
| V.I.N. | 7H2BE1627D068399 | TYPE: | TRAILER 7 X 16 TA - 3800LB |