

7'x16' Rock Solid Cargo Enclosed Cargo



~~\$9,829~~ **\$8,799**

Stock #: 10615

VIN: 7H2BE1628TD068251

Category: Enclosed Cargo

Cond.: New

Year: 2026

Make: Rock Solid Cargo

Model:

Color: True Blue

Width: 7' **Length:** 16'

GVWR: 7K

ADDITIONAL DETAILS: Height: 7', Weight: 2,260, Axles: 2, Pull Type: Bumper, Construction: Steel, Features: .080 Exterior Siding, 2 Way Aluminum Side Wall Vent, ATP Front and Rear Corners, BLACK OUT PKG, Dual Led Tail Lights, Semi Screwless - Seams Only

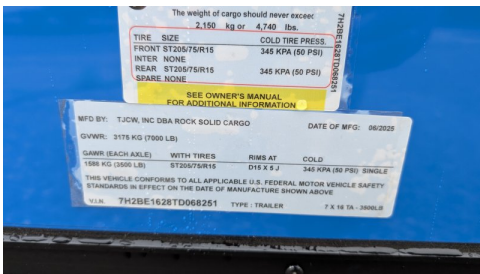
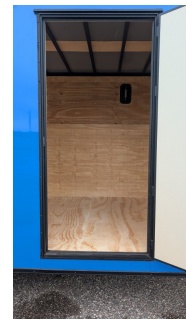
7'x16' Rock Solid Cargo Enclosed Cargo

This trailer features a sleek and durable exterior with .080 exterior siding, providing a smooth finish with semi-screwless seams for a clean look. The ATP front and rear corners add extra protection and a polished appearance. Enhanced ventilation is provided by 2-way aluminum sidewall vents, ensuring optimal airflow.

Features a striking Black Out Package, highlighted by all black trim and sleek black ATP fenders. It boasts a black stone guard and V-nose for a unified aesthetic, complemented by black ATP stepwells on 8.5' wide models. The look is completed with black barlocks, aluminum wheels with black inlay, and black aluminum side vents, creating a bold and cohesive appearance.

This heavy-duty enclosed trailer is built with a robust 6" steel tube main frame and features 16" on-center spacing for its roof bows, floor cross members, and sidewalls, ensuring superior structural integrity. It boasts a durable 5/8" plywood floor and 3/8" plywood walls, complemented by a Therma Cool ceiling liner for climate management. Access is convenient through a 36" side door with a flush lock, illuminated by a 12-volt LED dome light. It rides smoothly on 3500 lbs. drop leaf spring axles equipped with electric brakes on both axles and E-Z Lube hubs, all on silver mod wheels with aluminum fenders. Additional features include a 2 5/16" coupler, 24" stone guard, a streamlined V-nose design, and full LED lighting. Inside, 4 floor mount D-rings help secure your cargo, and it connects easily with a 7-way Bargman plug.

#10615 Continued ...



The weight of cargo should never exceed
2,150 kg or 4,740 lbs

TIRE SIZE	COLD TIRE PRESS.
FRONT ST205/75R15	345 KPA (50 PSI)
INTER NONE	
REAR ST205/75R15	345 KPA (50 PSI)
SPARE NONE	

SEE OWNER'S MANUAL
FOR ADDITIONAL INFORMATION

MFD BY: TJCW, INC DBA ROCK SOLID CARGO DATE OF MFG: 06/2025
GVWR: 3175 KG (7000 LB)

GAWR (EACH AXLE)	WITH TIRES	RMS AT	COLD
1588 KG (3500 LB)	ST205/75R15	D15 5.2 J	345 KPA (50 PSI) SINGLE

THIS VEHICLE CONFORMS TO ALL APPLICABLE U.S. FEDERAL MOTOR VEHICLE SAFETY STANDARDS IN EFFECT ON THE DATE OF MANUFACTURE SHOWN ABOVE

VIN: 7H2BE1626TD06251 TYPE: TRAILER 7 X 16 TA - 2800LS