

8' 6"x24' Rock Solid Cargo Enclosed Cargo



\$16,369

Stock #: 11182

VIN: 7H2BE242XTD071953

Category: Enclosed Cargo/Enclosed Car Hauler

Cond.: New

Year: 2026

Make: Rock Solid Cargo

Model: 8.5 X 24 TA

Color: White

Width: 8' 6" **Length:** 24'

GVWR: 9990

ADDITIONAL DETAILS: Height: 7', Weight: 3,600, Axles: 2, Pull Type: Bumper, Construction: Steel, Features: .080 Exterior Siding, 2 Way Aluminum Side Wall Vent, 54" x 48" Drivers Side Escape Door, 60" Extended Triple Tube tongue, ATP Front and Rear Corners, BLACK OUT PKG, Dual Led Tail Lights, Rear Spoiler w/ Load Lights

8' 6"x24' Rock Solid Cargo 8.5 X 24 TA Enclosed Cargo

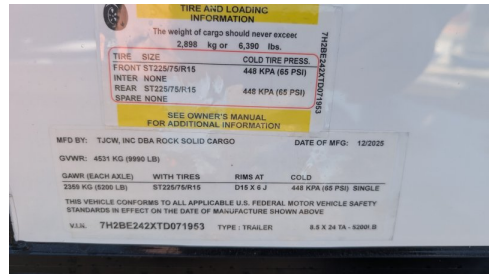
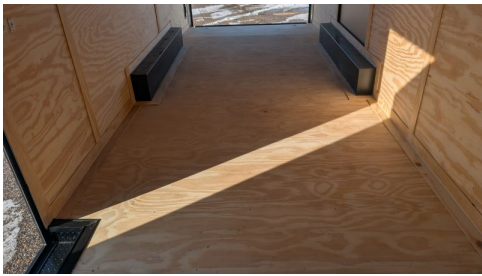
This trailer features a sleek and durable exterior with .080 exterior siding, providing a smooth finish with semi-screwless seams for a clean look. The ATP front and rear corners and headers add extra protection and a polished appearance. Enhanced ventilation is provided by 2-way aluminum sidewall vents, ensuring optimal airflow.

Features a striking Black Out Package, highlighted by all black trim and sleek black ATP fenders. It boasts a black stone guard and V-nose for a unified aesthetic, complemented by black ATP stepwells on 8.5' wide models. The look is completed with black barlocks, aluminum wheels with black inlay, and black aluminum side vents, creating a bold and cohesive appearance.

This trailer comes with an integrated Rear Spoiler with a Light Package, powered by a 12-volt battery with a dedicated box. The interior is brightly lit by four 48" 12-volt slim LED lights controlled by a wall switch. For exterior illumination, it features two 13" 12-volt LED flood lights on the spoiler and two additional 13" 12-volt LED flood lights on the passenger side.

This heavy-duty enclosed trailer is built to last with a robust 6" steel tube main frame and 16" on-center spacing for the roof bows, floor cross members, and sidewalls, ensuring superior structural integrity. It features a durable 5/8" plywood floor and 3/8" plywood walls, plus a Therma Cool ceiling liner for climate management. Access is easy via a 36" side door with a flush lock and an ATP covered stepwell, illuminated by a 12-volt LED dome light. For secure transport, it includes electric brakes on both axles, a 7-way Bargman plug, and E-Z Lube hubs on its silver mod wheels. The V-nose design, 24" stone guard, and aluminum fenders add to its functionality and protection. Inside, you'll find 4 floor mount D-rings to secure your cargo, and a no-show beavertail for smooth loading. All lighting is LED for reliability.

#11182 Continued ...



TIRE AND LOADING INFORMATION
 The weight of cargo should never exceed
 2,898 kg or 6,390 lbs.

TIRE SIZE	COLD TIRE PRESS.
FRONT ST225/75R15	448 KPA (65 PSI)
INTER NONE	448 KPA (65 PSI)
REAR ST225/75R15	448 KPA (65 PSI)
SPARE NONE	

SEE OWNER'S MANUAL FOR ADDITIONAL INFORMATION

MFD BY: TJCW, INC DBA ROCK SOLID CARGO DATE OF MFG: 12/2025
 GVWR: 4531 KG (9990 LB)

GAWR (EACH AXLE)	WITH TIRES	RIMS AT	COLD
2300 KG (5000 LB)	ST225/75R15	D15 X 6 J	448 KPA (65 PSI) SINGLE

THIS VEHICLE CONFORMS TO ALL APPLICABLE U.S. FEDERAL MOTOR VEHICLE SAFETY STANDARDS IN EFFECT ON THE DATE OF MANUFACTURE SHOWN ABOVE

V.I.N. 7H2BE24ZTD071953 TYPE: TRAILER 8.8 X 24 TA - 5200-B