

7'x12' Rock Solid Cargo Enclosed Cargo



\$8,009

Stock #: 11216

VIN: 7H2BE1220TD071506

Category: Enclosed Cargo

Cond.: New

Year: 2026

Make: Rock Solid Cargo

Model: 7 X 12 TA

Color: Black

Width: 7' **Length:** 12'

GVWR: 7K

ADDITIONAL DETAILS: Height: 6' 3", Weight: 1,960, Axles: 2, Pull Type: Bumper, Construction: Steel, Features: .080 Exterior Siding, 2 Way Aluminum Side Wall Vent, ATP Front and Rear Corners, BLACK OUT PKG, Semi Screwless - Seams Only

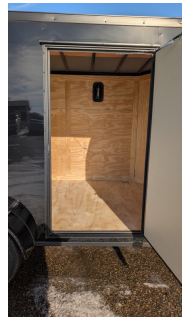
7'x12' Rock Solid Cargo 7 X 12 TA Enclosed Cargo

This trailer features a sleek and durable exterior with .080 exterior siding, providing a smooth finish with semi-screwless seams for a clean look. The ATP front and rear corners and headers add extra protection and a polished appearance. Enhanced ventilation is provided by 2-way aluminum sidewall vents, ensuring optimal airflow.

Features a striking Black Out Package, highlighted by all black trim and sleek black ATP fenders. It boasts a black stone guard and V-nose for a unified aesthetic, complemented by black ATP stepwells on 8.5' wide models. The look is completed with black barlocks, aluminum wheels with black inlay, and black aluminum side vents, creating a bold and cohesive appearance.

This heavy-duty enclosed trailer is built with a robust 4" steel tube main frame and features 16" on-center spacing throughout its roof bows, floor cross members, and sidewalls for superior strength. It includes a durable 5/8" plywood floor and 3/8" plywood walls, along with a Therma Cool ceiling liner for climate control. Access is convenient through a 36" side door with a flush lock, illuminated by a 12-volt LED dome light. It rides smoothly on 3500 lbs. drop leaf spring axles equipped with electric brakes on both axles and E-Z Lube hubs, all on silver mod wheels with aluminum fenders. Additional features include a 2 5/16" coupler, 24" stone guard, a streamlined V-nose design, and full LED lighting. Inside, 4 floor mount D-rings help secure your cargo, and it connects easily with a 7-way Bargman plug.

#11216 Continued ...



TIRE AND LOADING INFORMATION

The weight of cargo should never exceed
2,286 kg or 5,040 lbs.

TIRE	SIZE	COLD TIRE PRESS.
FRONT	ST205/75R15	345 KPA (50 PSI)
INTER	NONE	
REAR	ST205/75R15	345 KPA (50 PSI)
SPARE	NONE	

SEE OWNER'S MANUAL FOR ADDITIONAL INFORMATION

MFD BY: TJOW, INC DBA ROCK SOLID CARGO DATE OF MFG: 12/2025

GVWR: 3175 KG (7000 LB)

CLAW: (EACH AXLE)	WITH TIRES	RIMS AT	COLD
1050 KG (2300 LB)	ST205/75R15	D15 X 5 J	345 KPA (50 PSI) SINGLE

THIS VEHICLE CONFORMS TO ALL APPLICABLE U.S. FEDERAL MOTOR VEHICLE SAFETY STANDARDS IN EFFECT ON THE DATE OF MANUFACTURE SHOWN ABOVE

V.I.N. 7H2BE122TD071506 TYPE: TRAILER 7 X 12 TA - 3800-L