

7'x16' Rock Solid Cargo Enclosed Cargo



\$7,810

Stock #: 11327

VIN: 7H2BE1621TD059682

Category: Enclosed Cargo

Cond.: New

Year: 2026

Make: Rock Solid Cargo

Model: 7 X 16 TA

Color: White

Width: 7' **Length:** 16'

GVWR: 7K

ADDITIONAL DETAILS: Height: 6' 3", Weight: 2,260, Axles: 2, Pull Type: Bumper, Construction: Steel, Features: 2 Way Aluminum Side Wall Vent, ATP Front and Rear Corners

7'x16' Rock Solid Cargo 7 X 16 TA Enclosed Cargo

"We've partnered directly with the manufacturer to help them clear out specific inventory, and the savings are being passed directly to you. These trailers are arriving at our Clearwater lot with one goal: to move fast. The Deal: Pricing has been 'blown out' far below standard retail.

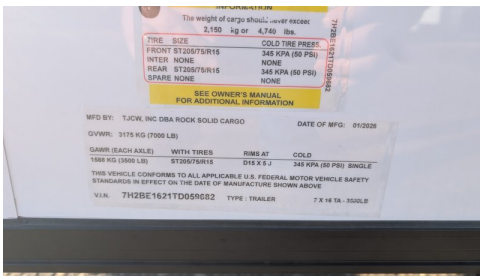
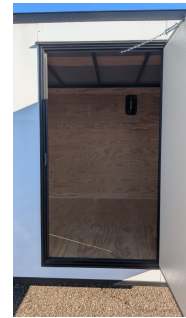
The Stock: These units feature different specifications than our signature 5wtrailers line, allowing us to offer them at a price point we rarely see.

The Catch: Once they're gone, they're gone. These are not part of our standard year-round inventory.

24" ON CENTER ROOF

Features a striking Black Out Package, highlighted by all black trim and sleek black ATP fenders. It boasts a black stone guard and V-nose for a unified aesthetic, complemented by black ATP stepwells on 8.5' wide models. The look is completed with black barlocks, aluminum wheels with black inlay, and black aluminum side vents, creating a bold and cohesive appearance.

#11327 Continued ...



The weight of cargo should never exceed
2,100 kg or 4,740 lbs.

TIRE SIZE	COLD TIRE PRESS.
FRONT ST205/75R15	345 KPA (50 PSI)
INTER NONE	NONE
REAR ST205/75R15	345 KPA (50 PSI)
SPARE NONE	NONE

SEE OWNER'S MANUAL FOR ADDITIONAL INFORMATION

MFD BY: TJCW, INC DBA ROCK SOLID CARGO DATE OF MFG: 01/2020
GVWR: 3175 KG (7000 LB)
GAWR (EACH AXLE) WITH TIRES SIZES AT COLD
1588 KG (3500 LB) ST205/75R15 D15 X 5.7 345 KPA (50 PSI) SINGLE

THIS VEHICLE CONFORMS TO ALL APPLICABLE U.S. FEDERAL MOTOR VEHICLE SAFETY STANDARDS IN EFFECT ON THE DATE OF MANUFACTURE SHOWN ABOVE
VIN: 7H2BE1621TD05952 TYPE: TRAILER 2 X 16 TA -350LB