

7'x14' Rock Solid Cargo Concession



\$10,249

Stock #: 11378

VIN: 7H2BE1426TD071331

Category: Concession

Cond.: New

Year: 2026

Make: Rock Solid Cargo

Model: 7 x 14 TA

Color: Red

Width: 7' **Length:** 14'

GVWR: 7K

ADDITIONAL DETAILS: Height: 7', Weight: 2,120, Axles: 2, Pull Type: Bumper, Construction: Steel, Features: .080 Exterior Siding, ATP Front and Rear Corners, Semi Screwless - Seams Only

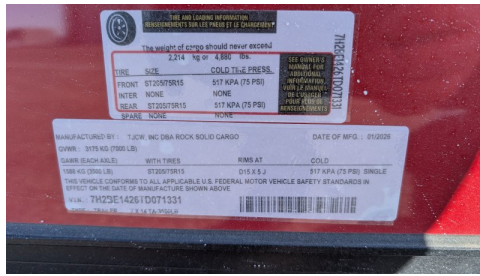
7'x14' Rock Solid Cargo 7 x 14 TA Concession

This trailer features a sleek and durable exterior with .080 exterior siding, providing a smooth finish with semi-screwless seams for a clean look. The ATP front and rear corners and headers add extra protection and a polished appearance. Enhanced ventilation is provided by 2-way aluminum sidewall vents, ensuring optimal airflow.

Features a striking Black Out Package, highlighted by all black trim and sleek black ATP fenders. It boasts a black stone guard and V-nose for a unified aesthetic, complemented by black ATP stepwells on 8.5' wide models. The look is completed with black barlocks, aluminum wheels with black inlay, and black aluminum side vents, creating a bold and cohesive appearance.

This Concession Trailer Package is designed for efficient roadside sales and service, featuring a practical layout for easy operation. Access is managed through a full-sized 36" x 78" rear side door for seamless entry and exit. The main serving area includes a 3' x 5' concession door positioned 36" above the finished floor and on the center of the passenger side, perfect for customer interaction. The included electrical package ensures you're ready to operate, providing power via a 60 AMP box with a 50 AMP motorbase and a 50 AMP twist-lock cord. Interior illumination is provided by two bright 12" x 12" LED 100-volt lights, controlled by a single switch, and complemented by two conveniently placed receptacles for your essential equipment.

#11378 Continued ...



TIRE AND LOAD INFORMATION	
INDEPENDENT TIRE WEAR IS A CHARACTERISTIC	
The weight of cargo should never exceed	
2,214 kg or 4,900 lbs	
SIZE	COLD TIRE PRESS.
FRONT: ST20578R15	517 KPA (75 PSI)
REAR: ST20578R15	517 KPA (75 PSI)
SPARE: NONE	NONE

MANUFACTURED BY: T&W, INC DBA ROCK SOLID CARGO
 GVWR: 3175 KG (7000 LB)
 DIMENSIONS: 2214 x 1016 x 1525
 THIS VEHICLE CONFORMS TO ALL APPLICABLE U.S. FEDERAL MOTOR VEHICLE SAFETY STANDARDS IN EFFECT ON THE DATE OF MANUFACTURE SHOWN ABOVE
 VIN: 7K32C1A22610071331