

## 8' 6"x20' Rock Solid Cargo Enclosed Cargo



~~\$25,578~~ **\$22,815**

**Stock #:** 11516

**VIN:** 7H2BE2024SD065053

**Category:** Enclosed Cargo/Enclosed Car Hauler

**Cond.:** New

**Year:** 2025

**Make:** Rock Solid Cargo

**Model:** 8.5 X 20 TA

**Color:** Charcoal Gray

**Width:** 8' 6" **Length:** 20'

**GVWR:** 9990

**ADDITIONAL DETAILS:** Height: 7' 6", Weight: 3,200, Axles: 2, Pull Type: Bumper, Construction: Steel, Features: .080 Exterior Siding, 10" Bogey Wheels, 2 Way Aluminum Side Wall Vent, 60" Extended Triple Tube tongue, ATP Front and Rear Corners, Barlock on Door, BLACK OUT PKG, Dual Led Tail Lights, Power Tongue Jack, Rear Load Lights, Roof Vent, Semi Screwless - Seams Only, Side Door, Side Ramps

8' 6"x20' Rock Solid Cargo 8.5 X 20 TA Enclosed Cargo

This professional-grade Charcoal Gray Polycore custom trailer is a powerhouse of durability and style, engineered for those who demand a "Rock Solid" build. Cloaked in a sleek .080 Polycore exterior with a full Black Out Package, it features black ATP accents across the sides, rear, fenders, and stoneguard, providing a sharp, aggressive look that holds up on the road. Structural integrity is at the forefront with 12" on-center cross members, heavy-gauge angle reinforcement on the top and bottom walls, and a massive 7,000 lb torsion axle system supported by a 60" extended triple tube tongue. The interior is equally rugged, boasting 12" additional height, 3/4" pressure-treated double plywood floors, and 3/4" plywood walls, all kept comfortable by a Therma Cool ceiling and a trio of Maxxair-covered vents.

Designed for maximum utility and ease of access, this unit is equipped with a Super Duty ramp door featuring double spring assist, a 5' side ramp, and 60" x 78" Elixer double doors. Loading and securing cargo is effortless thanks to 90 total feet of E-track with steel backing, 10" bogey wheels for ground clearance, and a comprehensive 50-amp electrical package. Power needs are fully covered by an 18' electric awning with its own battery, recessed dual battery boxes, and a sophisticated lighting array including 48" interior slim lights and seven 13" exterior LED floodlights. From the black ATP covered tongue to the adjustable 2-5/16" coupler, every inch of this trailer is spec'd for heavy-duty performance and a premium aesthetic.

**FACTORY CLEARANCE EVENT:** Below-Market Pricing on Limited Inventory

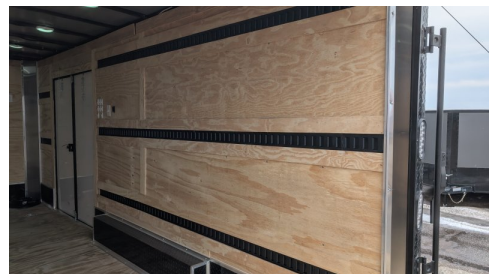
We've partnered directly with the manufacturer to help them clear out specific inventory, and the savings are being passed directly to you. These trailers are arriving at our Clearwater lot with one goal: to move fast.

The Deal: Pricing has been 'blown out' far below standard retail.

The Stock: These units feature different specifications than our signature 5wtrailers line, allowing us to offer them at a price point we rarely see.

The Catch: Once they're gone, they're gone. These are not part of our standard year-round inventory.

#11516 Continued ...



#11516 Continued ...

