

## 6'x12' Rock Solid Cargo Enclosed Cargo



**\$4,872**

**Stock #:** 11719

**VIN:** 7H2BE1214TD073508

**Category:** Enclosed Cargo

**Cond.:** New

**Year:** 2026

**Make:** Rock Solid Cargo

**Model:** 6 X 12 SA

**Color:** Black

**Width:** 6' **Length:** 12'

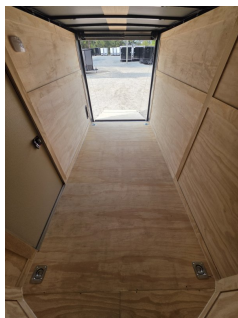
**GVWR:** 2,990

**ADDITIONAL DETAILS:** Height: 6' 3", Axles: 1, Pull Type: Bumper, Construction: Steel Frame / Aluminum Skin, Features: .080 Exterior Siding, 2 Way Aluminum Side Wall Vent, ATP Front and Rear Corners, Ramp Gate, Semi Screwless - Seams Only

### 6'x12' Rock Solid Cargo 6 X 12 SA Enclosed Cargo

This heavy-duty enclosed trailer is built to last with a robust 3" steel tube main frame and 24" on-center spacing for the roof bows, and on floor cross members, 16" on sidewalls, ensuring superior structural integrity. It features a durable 5/8" plywood floor and 3/8" plywood walls, plus a Therma Cool ceiling liner for climate management. Access is easy via a 36" side door with a flush lock and an ATP covered stepwell, illuminated by a 12-volt LED dome light. For secure transport, it includes electric brakes on both axles, a 7-way Bargman plug, and E-Z Lube hubs on its silver mod wheels. The V-nose design, 24" stone guard, and aluminum fenders add to its functionality and protection. Inside, you'll find 4 floor mount D-rings to secure your cargo, and a no-show beavertail for smooth loading. All lighting is LED for reliability.

.080 POLYCORE



#11719 Continued ...

