

8' 6"x16' Rock Solid Cargo Concession



\$54,999

Stock #: 11737

VIN: 7H2BE1620TD071418

Category: Concession

Cond.: New

Year: 2026

Make: Rock Solid Cargo

Model: 8.5 X 16 TA

Color: White

Width: 8' 6" **Length:** 16'

GVWR: 9990

ADDITIONAL DETAILS: Height: 7', Weight: 2,800, Axles: 2, Pull Type: Bumper, Construction: Steel, Features: .080 Exterior Siding, 2 Way Aluminum Side Wall Vent, 60" Extended Triple Tube tongue, ATP Front and Rear Corners, BLACK OUT PKG, Finished Interior, Semi Screwless - Seams Only

8' 6"x16' Rock Solid Cargo 8.5 X 16 TA Concession

Fully Furnished Concession Trailer

This heavy-duty enclosed trailer is built to last with a robust 8" steel tube main frame and 24" on-center spacing for the roof bows, and 16" on floor cross members, and sidewalls, ensuring superior structural integrity. It features a durable 5/8" plywood floor and 3/8" plywood walls, plus a Therma Cool ceiling liner for climate management. For secure transport, it includes electric brakes on both axles, a 7-way Bargman plug, and E-Z Lube hubs on its silver mod wheels. The aluminum fenders add to its functionality and protection. All lighting is LED for reliability.

This trailer features a sleek and durable exterior with .080 exterior siding, providing a smooth finish with semi-screwless seams for a clean look. The ATP front and rear corners and headers add extra protection and a polished appearance. Enhanced ventilation is provided by 2-way aluminum sidewall vents, ensuring optimal airflow.

This Concession Trailer Package is designed for efficient roadside sales and service, featuring a practical layout for easy operation. Access is managed through a full-sized 36" x 78" rear side door for seamless entry and exit. The main serving area includes a 3' x 6' concession door positioned 36" above the finished floor and on the center of the passenger side, perfect for customer interaction. The included electrical package ensures you're ready to operate, providing power via a 60 AMP box with a 50 AMP motorbase and a 50 AMP twist-lock cord. Interior illumination is provided by two bright 2' Flat Panel LED 100-volt lights, controlled by a single switch, and complemented by two conveniently placed receptacles for your essential equipment.

Exterior Generator Box

15K BTU A/C w/ heat strip

Black Exterior Propane cage

White Metal Walls and Ceiling

Base Cabinet

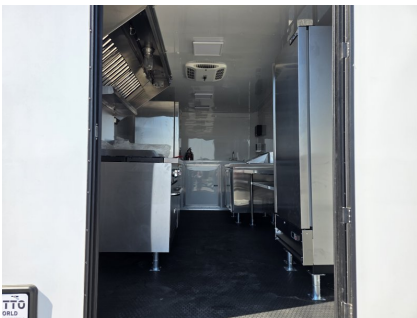
6' Range Hood

Water Package (45gal fresh tank, 57 gal waste tank, plumbing, water pump, city gravity feed, and 6 gal water heater)

15"x15" hand wash sink

Interior Receptacles (2 110V, 2 GFI 110...

#11737 Continued ...



#11737 Continued ...

