

82"x14' Doolittle Dump



\$12,969

Stock #: 11748

VIN: 1DGDP1428TM077698

Category: Dump

Cond.: New

Year: 2026

Make: Doolittle

Model: MD821414KSRI-B

Color: Black

Width: 82" **Length:** 14'

GVWR: 14K

ADDITIONAL DETAILS: Axles: 2, Pull Type: Bumper

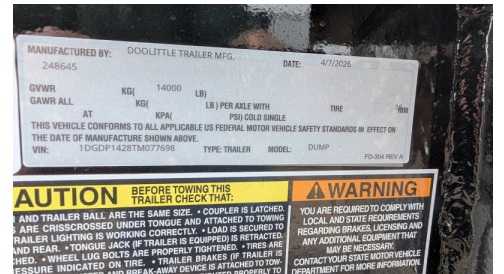
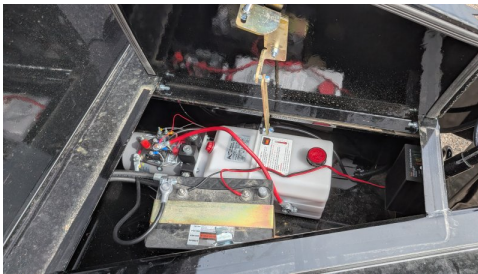
82"x14' Doolittle MD821414KSRI-B Dump

If you're looking for a beast of a dump trailer that doesn't cut corners, the Doolittle MD821414KSRI-B Master Dump is about as tough as they come. Measuring 82" x 14' with a beefy 14,000 lb. GVWR, this trailer is built on a heavy-duty 10" I-beam frame and features a massive 6" scissor hoist that provides a steep 45-degree dump angle—beating out the 5" cylinders you usually see on the market. It's designed to be low-profile with a 28" deck height, making it much easier to load equipment using the 6' self-storing ramps. Whether you're hauling gravel, mulch, or a skid steer, the 7-gauge steel floor and 24" solid steel sides can handle the abuse.

What really sets the Master Dump apart are the professional-grade touches that come standard. You get a versatile 3-way spreader gate (spread, swing, or barn door style) with EZ-slam latches, a 20' heavy-duty tarp kit already installed, and a wireless remote so you can operate the dump from the cab of your truck. It also features a lockable "Mammoth Box" on the tongue that houses the battery, a 5-amp trickle charger, and extra storage for chains or tools. Finished with a high-end two-part epoxy primer and polyurethane paint, this trailer is designed to resist rust and look great for years. It's a reliable, "do-it-all" workhorse that's backed by Doolittle's industry-leading 5-year structural warranty.



#11748 Continued ...



MANUFACTURED BY: DOOLITTLE TRAILER MFG. DATE: 4/7/2026
 248645

GVWR	KG	14000	LB)	
GAWR ALL	AT	KG(KPA(LB) PER AXLE WITH TIRE
				PSY (GROSS SINGLE

THIS VEHICLE CONFORMS TO ALL APPLICABLE US FEDERAL MOTOR VEHICLE SAFETY STANDARDS IN EFFECT ON THE DATE OF MANUFACTURE SHOWN ABOVE.
 VIN: 1DGD0P1G22TMO77928 TYPE: TRAILER MODEL: DUMP PD-304 REV A

AUTION BEFORE TOWING THIS TRAILER CHECK THAT:
 AND TRAILER BALL ARE THE SAME SIZE - COUPLER IS LATCHED
 ARE CROSSED UNDER TONGUE AND ATTACHED TO TOWING
 RAILER LIGHTING IS WORKING CORRECTLY - LOAD IS SECURED TO
 AND REAR - TONGUE JACK (IF TRAILER IS EQUIPPED) IS RETRACTED
 HED - WHEEL LUG BOLTS ARE PROPERLY TIGHTENED - TIRES ARE
 PRESSURE INDICATED ON TIRE - TRAILER BRAKES IF TRAILER IS
 AND BREAK-AWAY DEVICE IS ATTACHED TO TOWING

WARNING YOU ARE REQUIRED TO COMPLY WITH LOCAL AND STATE REQUIREMENTS REGARDING BRAKES, LIGHTING AND ANY ADDITIONAL EQUIPMENT THAT MAY BE NECESSARY. CONTACT YOUR STATE MOTOR VEHICLE DEPARTMENT FOR MORE INFORMATION.