

102"x24' Lamar Equipment



\$10,039

Stock #: 11782

VIN: 5RVBF2428TP154794

Category: Equipment/Deckover

Cond.: New

Year: 2026

Make: Lamar

Model: F8022427

Color: LAMAR GRAY

Width: 102" **Length:** 24'

GVWR: 14K

ADDITIONAL DETAILS: Weight: 4,231, Axles: 2, Pull Type: Bumper, Construction: Steel

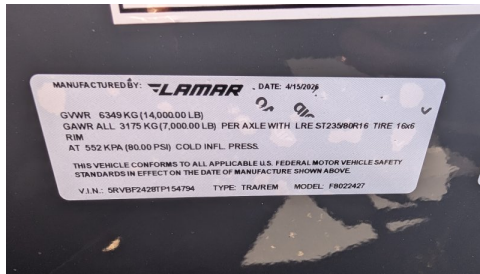
102"x24' Lamar F8022427 Equipment

Get ready to haul with confidence on this 2026 Lamar F8 Deckover Bumper Pull trailer (Model F8022427). This versatile flatbed measures 102 inches wide by 24 feet long and is built on a solid 8-inch, 10 lb I-beam frame with 16-inch center-to-center crossmembers. It's rated for a 14,000 lbs GVWR, featuring two 7K EZ-Lube electric brake spring axles for reliable stopping power. This unit is designed for easy loading of equipment, featuring a 5-foot dovetail paired with heavy-duty Rhino Ramps.

This trailer is packed with premium features, including a heavy-duty 2-5/16" 21K Demco adjustable cast coupler, dual 10K drop-leg jacks for maximum stability, and a front toolbox for convenient storage. The treated yellow pine floor is surrounded by a full rub rail, standard stake pockets, and four weld-on D-rings, providing endless tie-down flexibility. Finished in a durable Lamar Gray powder coat and equipped with a full LED package, this F8 deckover is built to work and last.



#11782 Continued ...



MANUFACTURED BY: **LAMAR** . DATE: 4/15/2016
GVWR 6349 KG (14,000.00 LB)
GAWR ALL 3175 KG (7,000.00 LB) PER AXLE WITH LRE ST235/80R16 TIRE 16x6 RIM AT 552 KPA (80.00 PSI) COLD INFL. PRESS.
THIS VEHICLE CONFORMS TO ALL APPLICABLE U.S. FEDERAL MOTOR VEHICLE SAFETY STANDARDS IN EFFECT ON THE DATE OF MANUFACTURE SHOWN ABOVE.
V.I.N.: 5R1BF2428T154794 TYPE: TRAILER MODEL: F8022427