

6'x12' Rock Solid Cargo Enclosed Cargo



\$7,489

Stock #: 11807

VIN: 7H2BE122XTD074042

Category: Enclosed Cargo

Cond.: New

Year: 2026

Make: Rock Solid Cargo

Model: 6 X 12 TA

Color: Brandywine

Width: 6' **Length:** 12'

GVWR: 7K

ADDITIONAL DETAILS: Height: 6' 3", Weight: 1,800, Axles: 2, Pull Type: Bumper, Construction: Steel, Features: .080 Exterior Siding, 2 Way Aluminum Side Wall Vent, ATP Front and Rear Corners, BLACK OUT PKG, Rear Spoiler w/ Load Lights, Semi Screwless - Seams Only

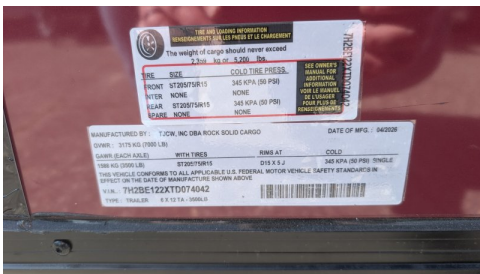
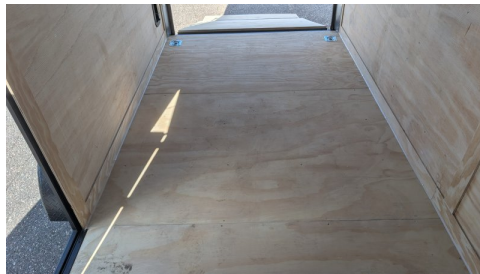
6'x12' Rock Solid Cargo 6 X 12 TA Enclosed Cargo

This trailer features a sleek and durable exterior with .080 exterior siding, providing a smooth finish with semi-screwless seams for a clean look. The ATP front and rear corners and headers add extra protection and a polished appearance. Enhanced ventilation is provided by 2-way aluminum sidewall vents, ensuring optimal airflow.

Features a striking Black Out Package, highlighted by all black trim and sleek black ATP fenders. It boasts a black stone guard and V-nose for a unified aesthetic, complemented by black ATP stepwells on 8.5' wide models. The look is completed with black barlocks, aluminum wheels with black inlay, and black aluminum side vents, creating a bold and cohesive appearance.

This robust trailer is built with a 4" steel tube main frame and features 16" on-center spacing for the roof bows, floor cross members, and sidewalls, ensuring exceptional durability. It boasts a hard-wearing 5/8" plywood floor and 3/8" plywood walls, complemented by a Therma Cool ceiling liner. Access is convenient through a 36" side door with a flush lock, illuminated by a 12-volt LED dome light. It's equipped with 3500 lbs. drop leaf spring axles, electric brakes on both axles, and E-Z Lube hubs on silver mod wheels with aluminum fenders. Other key features include a 2 5/16" coupler, 24" stone guard, a sleek V-nose design, and full LED lighting. Inside, you'll find 4 floor mount D-rings to secure your cargo, and it connects easily with a 7-way Bargman plug.

#11807 Continued ...



<p>THE WEIGHT RESTRICTION INFORMATION IS THE FACTOR OF DANGEROUS</p> <p>The weight of cargo should never exceed 2,000 lbs or 5,000 lbs</p>		<p>SEE OWNER'S MANUAL FOR RESTRICTION INFORMATION AND WEIGHT LIMITS (TOWING/LOADING)</p>
TYPE	SIZE	COLD USE PRES.
FRONT	ST20575R15	345 KPA (50 PSI)
HYDR	NONE	NONE
REAR	ST20575R15	345 KPA (50 PSI)
SPARE	NONE	NONE

MANUFACTURED BY: TJCW, INC DBA ROCK SOLID CARGO DATE OF MFG.: 04/2020

GVWR: 3175 KG (7000 LBS) WITH TIRES RING AT COLD

GVWR (5000 LBS) ST20575R15 215 X 17.5 345 KPA (50 PSI) SINGLE

THIS VEHICLE COMPLIES TO ALL APPLICABLE U.S. FEDERAL MOTOR VEHICLE SAFETY STANDARDS IN EFFECT ON THE DATE OF MANUFACTURE SHOWN ABOVE

VIN: 7H0BE122XTD074042

TYPE: TRAILER 6 X 12 5K 1000LB