

7'x16' Rock Solid Cargo Enclosed Cargo



\$10,369

Stock #: 11819

VIN: 7H2BE1625TD074041

Category: Enclosed Cargo

Cond.: New

Year: 2026

Make: Rock Solid Cargo

Model: 7 X 16 TA

Color: Brandywine

Width: 7' **Length:** 16'

GVWR: 7K

ADDITIONAL DETAILS: Height: 7', Weight: 2,260, Axles: 2, Pull Type: Bumper, Features: .080 Exterior Siding, 2 Way Aluminum Side Wall Vent, ATP Front and Rear Corners, BLACK OUT PKG, Semi Screwless - Seams Only

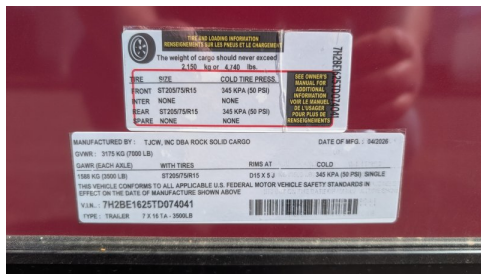
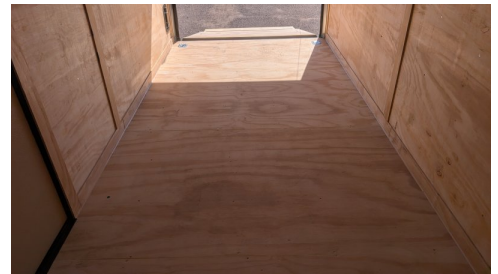
7'x16' Rock Solid Cargo 7 X 16 TA Enclosed Cargo

This trailer features a sleek and durable exterior with .080 exterior siding, providing a smooth finish with semi-screwless seams for a clean look. The ATP front and rear corners and headers add extra protection and a polished appearance. Enhanced ventilation is provided by 2-way aluminum sidewall vents, ensuring optimal airflow.

This heavy-duty enclosed trailer is built with a robust 6" steel tube main frame and features 16" on-center spacing for its roof bows, floor cross members, and sidewalls, ensuring superior structural integrity. It boasts a durable 5/8" plywood floor and 3/8" plywood walls, complemented by a Thermo Cool ceiling liner for climate management. Access is convenient through a 36" side door with a flush lock, illuminated by a 12-volt LED dome light. It rides smoothly on 3500 lbs. drop leaf spring axles equipped with electric brakes on both axles and E-Z Lube hubs, all on silver mod wheels with aluminum fenders. Additional features include a 2 5/16" coupler, 24" stone guard, a streamlined V-nose design, and full LED lighting. Inside, 4 floor mount D-rings help secure your cargo, and it connects easily with a 7-way Bargman plug.

This trailer comes with an integrated Rear Spoiler.

#11819 Continued ...



TIRE LOAD INFORMATION		SEE OWNER'S MANUAL FOR ADDITIONAL INFORMATION	
The weight of cargo should never exceed 4,100 lbs or 4,140 lbs.			
TIRE	SIZE	SOLID TIRE PRESS.	SEE OWNER'S MANUAL FOR ADDITIONAL INFORMATION
FRONT	ST205/75R15	340 KPA (50 PSI)	WALL CARRIER
REAR	ST205/75R15	340 KPA (50 PSI)	FOUR PLIES @ 1000/1000/1000
SPARE	NONE	NONE	

MANUFACTURED BY: TACW, INC DBA ROCK SOLID CARGO DATE OF MFG.: 9/20/20
 GVWR: 1070 KG (2350 LB) WITH TIRES RIMS AT COLD
 1500 KG (3300 LB) ST205/75R15 D15 X 5.2 340 KPA (50 PSI) SINGLE
 THIS VEHICLE CONFORMS TO ALL APPLICABLE U.S. FEDERAL MOTOR VEHICLE SAFETY STANDARDS IN EFFECT ON THE DATE OF MANUFACTURE SHOWN ABOVE
 VIN: 7HZBE16Z5D074541
 CTR: 704438 7 2 15 16 - 5006L