

82"x12' Quality Steel & Aluminum Utility



\$3,239

Stock #: 11877

VIN: 5LEB1UD17V1261759

Category: Utility

Cond.: New

Year: 2027

Make: Quality Steel & Aluminum

Model: 8212AN3.5KSA

Color: Black

Width: 82" **Length:** 12'

GVWR: 2,990

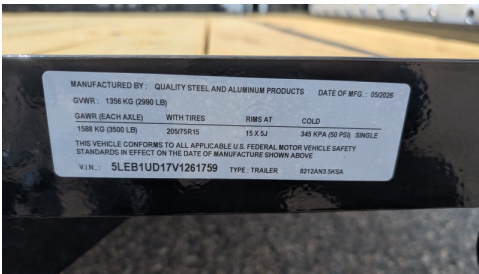
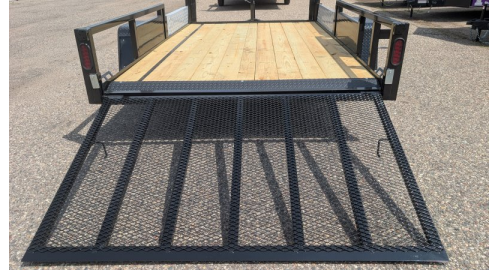
ADDITIONAL DETAILS: Height: 17", Weight: 960, Axles: 1, Pull Type: Bumper, Construction: Steel, Features: Side Ramps

82"x12' Quality Steel & Aluminum 8212AN3.5KSA Utility

If you need a reliable, everyday workhorse that's easy to tow but still gives you plenty of room to stretch out, this Quality Steel and Aluminum 82" x 12' utility trailer hits the absolute sweet spot. Built on a rugged, powder-coated steel frame with structural tube top rails, it offers a wide 82-inch deck that makes it incredibly easy to load up wider ATVs, side-by-sides, or commercial lawn mowers. Because it features a single 3,500 lb. axle derated to a 2,990 lb. GVWR, you get a highly capable payload capacity of around 2,000 lbs. without having to worry about the extra maintenance, weight, or annual registration hassles that come with heavier braked trailers. Topped off with an easy-lowering rear mesh ramp gate, smooth-riding radial tires, and full LED lighting, it's a smooth-towing, exceptionally durable setup designed to make your daily hauling chores completely painless.



#11877 Continued ...



MANUFACTURED BY: QUALITY STEEL AND ALUMINUM PRODUCTS DATE OF MFG.: 05/2025
GVWR: 1356 KG (2990 LB)
GAWR (EACH AXLE) WITH TIRES RIMS AT COLD
1588 KG (3500 LB) 205/75R15 15 X 5J 340 KPA (50 PSI) SINGLE
THIS VEHICLE CONFORMS TO ALL APPLICABLE U.S. FEDERAL MOTOR VEHICLE SAFETY
STANDARDS IN EFFECT ON THE DATE OF MANUFACTURE SHOWN ABOVE
VIN: 5LEB1UD17V1261759 TYPE: TRAILER 8212AN15K3A